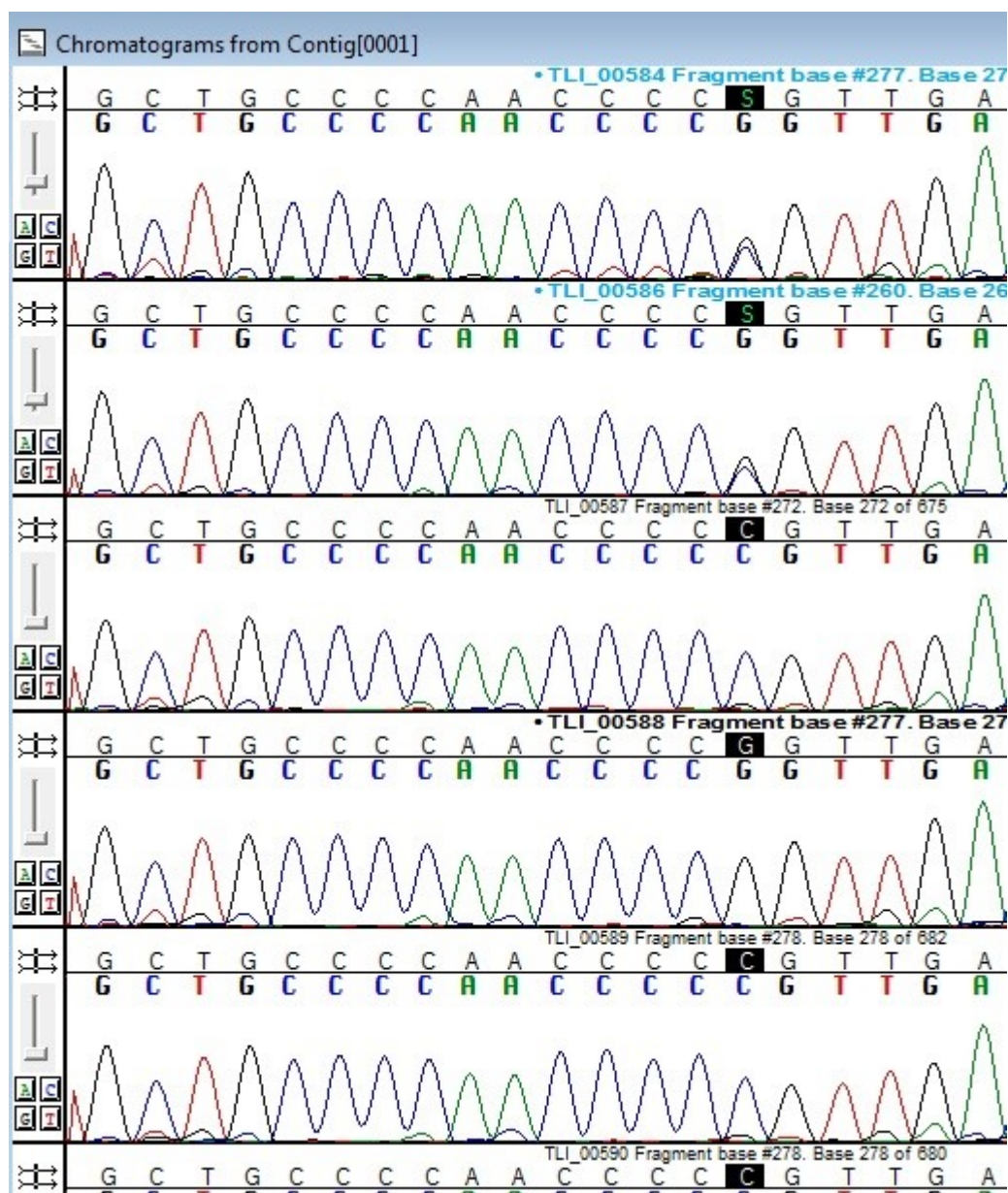
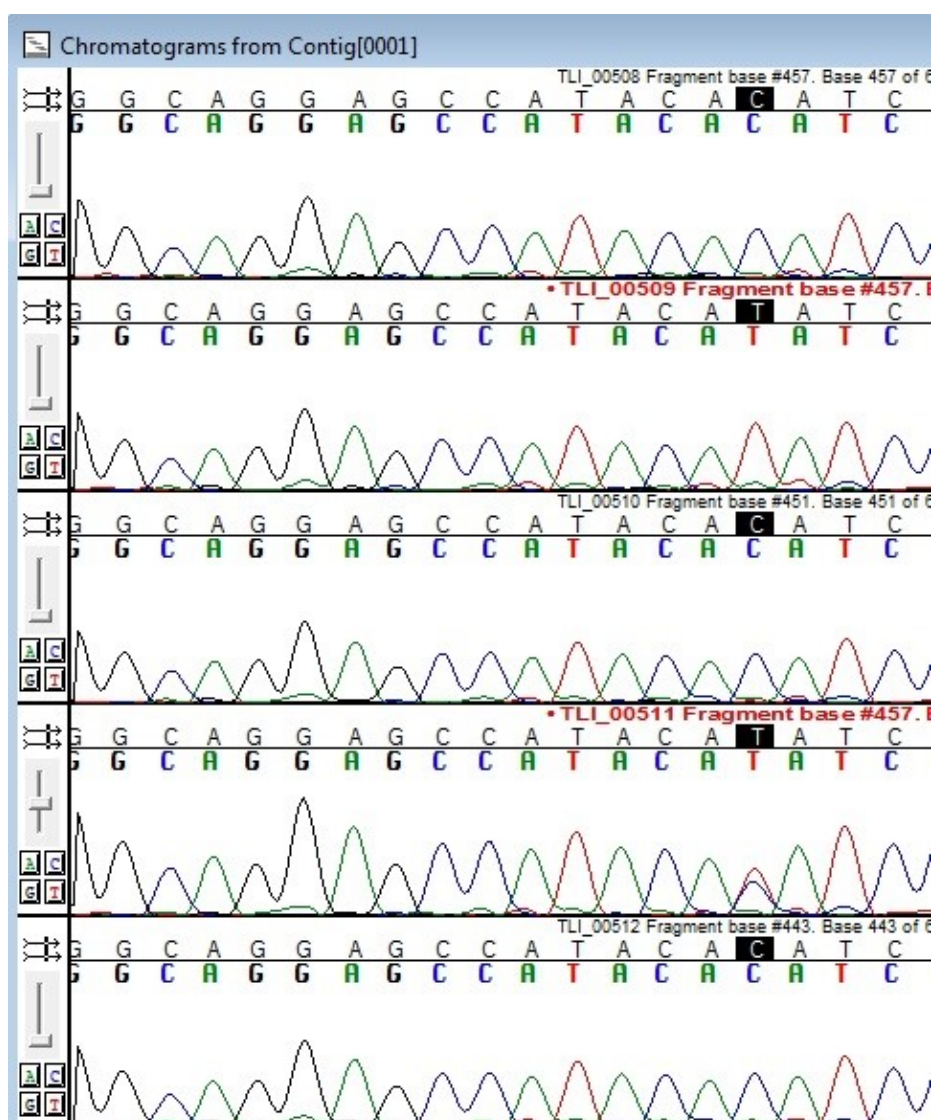


**Figure S1.** Electropherograms of SNPs and genotypes in three genes (*CAPNI*, *CAST* and *DGAT*) analyzed. *CAPNI* segment 1: Ex9-g. 316 C>G

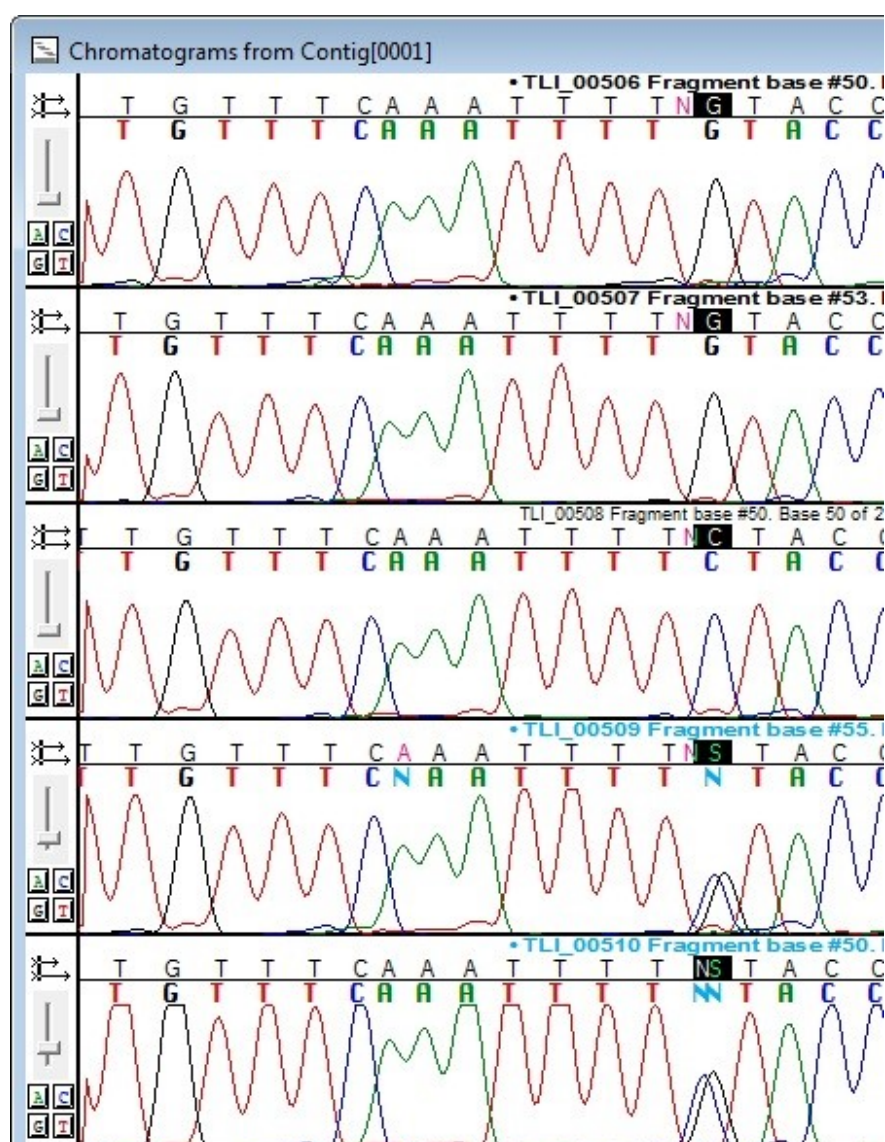


**Figure S2.** Electropherograms of SNPs and genotypes in three genes (*CAPNI*, *CAST* and *DGAT*) analyzed. *CAPNI* segment 2: In13-g. 4506 C>G

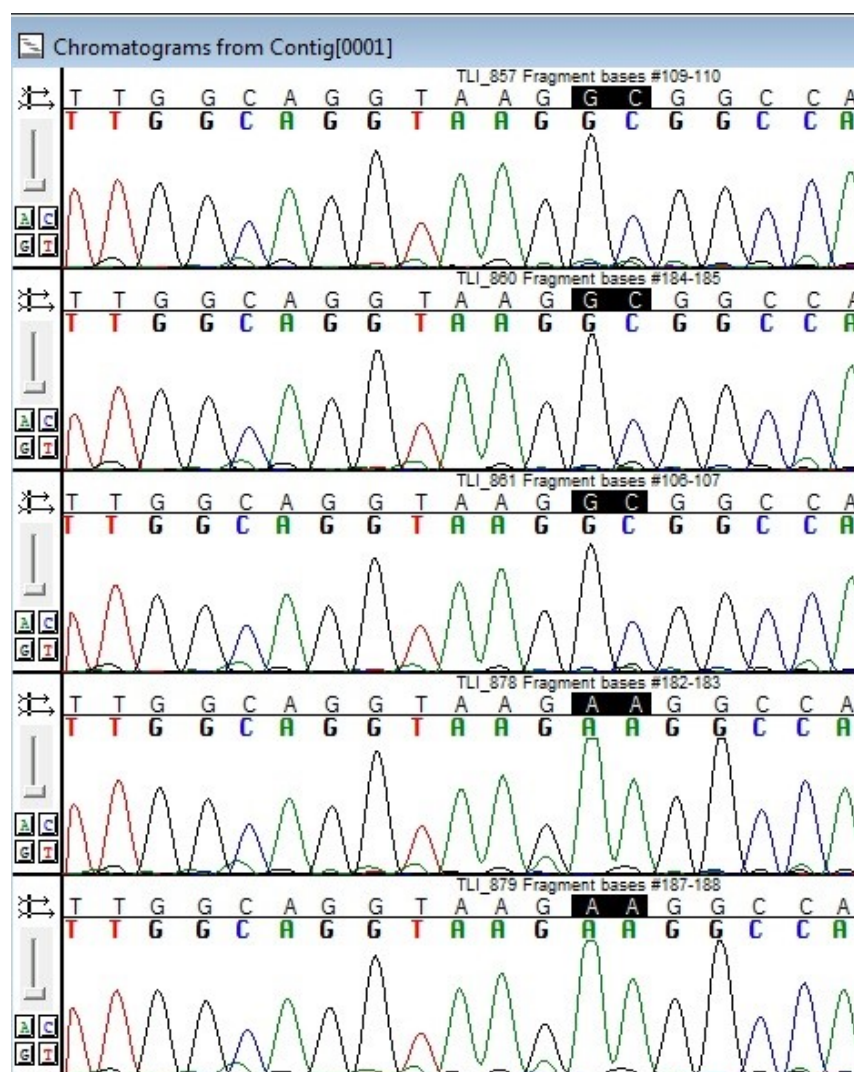


**Figure S3.** Electropherograms of SNPs and genotypes in three genes (*CAPNI*, *CAST* and *DGAT*) analyzed. *CAPNI* segment 2: In14-g. 4685 C>T





**Figure S4.** Electropherograms of SNPs and genotypes in three genes (*CAPNI*, *CAST* and *DGAT*) analyzed. *CAST*: In8-g. 282 C>G



**Figure S5.** Electropherograms of SNPs and genotypes in three genes (*CAPNI*, *CAST* and *DGAT1*: Ex8-g. 232 KK>AA